

# CUSTOM RACING SUIT GUIDE

Want a custom suit? No problem. In 3 easy steps you'll be on the right track to that professional look you've always desired. Here's some guidance to help.

- ✓ **Measurements** - We need to know your size, head to toe.
- ✓ **Suit Style** - Choose from our styles or create your own.
- ✓ **Suit Options** - Select the fine details to define your style.

*You've dreamed long enough.* Time to get started. →



# MEASUREMENTS

First thing's first, we need to know your size. Our custom racing suits are built to your exact measurements, so break out that cloth tape measure. A ruler and string also works, too.

PLEASE NOTE:

Your custom driving suit is intended to fit you best when sitting in the driving position. Therefore, do not try to adjust the numbers you provide on this form.

- |   |   |
|---|---|
| <b>A</b> _____"<br><b>ARM</b><br>Circumference of arm at armpit over shoulder                               | <b>K</b> _____"<br><b>BACK NECK TO WAIST</b><br>Length from base of neck to middle of belt                        |
| <b>B</b> _____"<br><b>NECK</b><br>Circumference at base of neck   | <b>L</b> _____"<br><b>WAIST TO WAIST</b><br>Middle of belt, in front, through crotch to middle of belt in back    |
| <b>C</b> _____"<br><b>CHEST</b><br>Circumference of chest at armpit   | <b>M</b> _____"<br><b>ARM LENGTH</b><br>Length from center of back to wrist, with hand touching opposite shoulder |
| <b>D</b> _____"<br><b>STOMACH</b><br>Circumference of stomach at the largest point                          | <b>N</b> _____"<br><b>SHOULDER WIDTH</b><br>Outside width of shoulder at widest point                             |
| <b>E</b> _____"<br><b>WAIST</b><br>Circumference of waist at the largest point                              | <b>O</b> _____"<br><b>HIPS</b><br>Circumference of hips at crotch level   |
| <b>F</b> _____"<br><b>THIGH</b><br>Circumference of thigh 3" below the crotch                               | <b>P</b> _____"<br><b>UNDERARM TO ANKLE</b><br>Length from armpit to ankle  |
| <b>G</b> _____"<br><b>CALF</b><br>Circumference of calf at the thickest point                               | <b>Q</b> _____"<br><b>WAIST TO ANKLE</b><br>Length from middle of belt to ankle bone                              |
| <b>H</b> _____"<br><b>INSEAM</b><br>Length from crotch highest point to ankle bone                          | <b>R</b> _____"<br><b>HEIGHT</b>  |
| <b>I</b> _____"<br><b>TORSO CIRCUMFERENCE</b><br>Length from base of front neck through legs to back neck   | <b>S</b> _____"<br><b>WEIGHT</b>  |
| <b>J</b> _____"<br><b>FRONT NECK TO WAIST</b><br>Length from hollow at base of front neck to middle of belt |   |

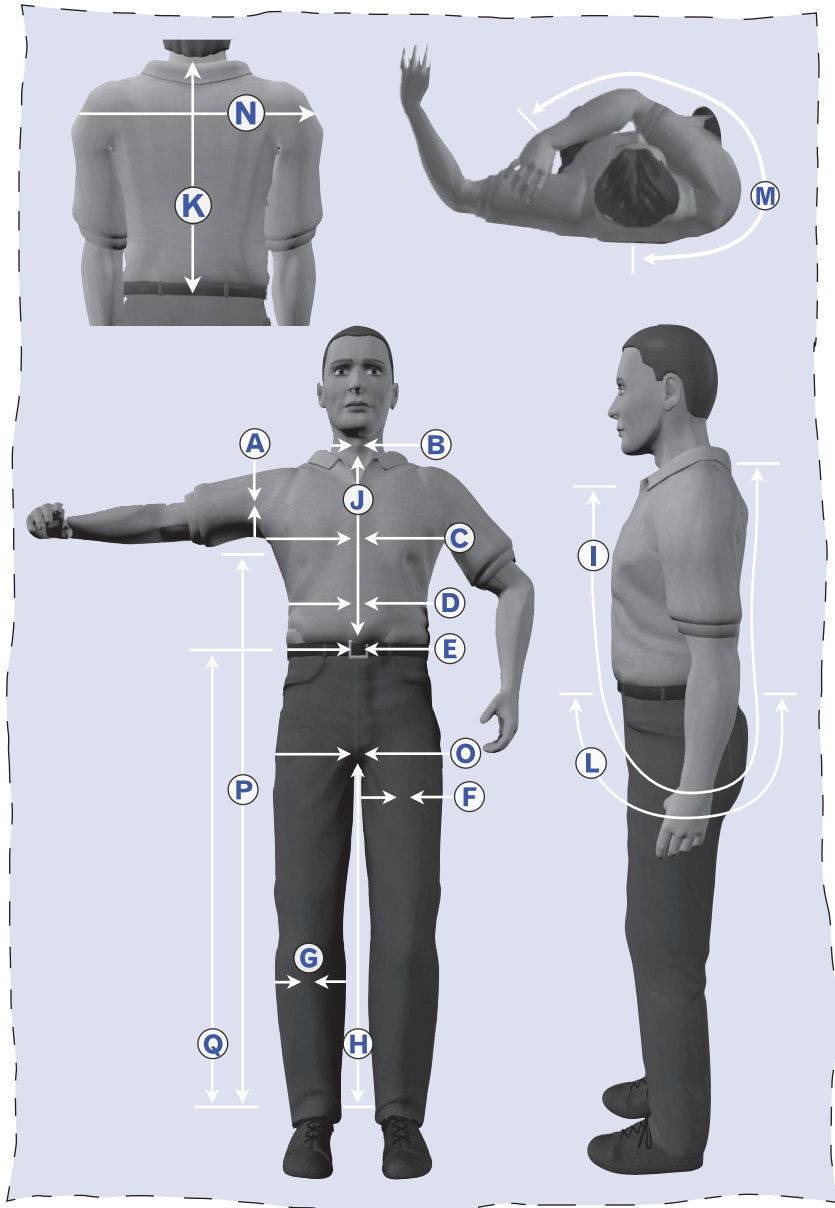
driver's name: \_\_\_\_\_

day phone: (     ) \_\_\_\_\_

address: \_\_\_\_\_

city: \_\_\_\_\_ state: \_\_\_\_\_ zip: \_\_\_\_\_

customer #: \_\_\_\_\_ blood type: \_\_\_\_\_



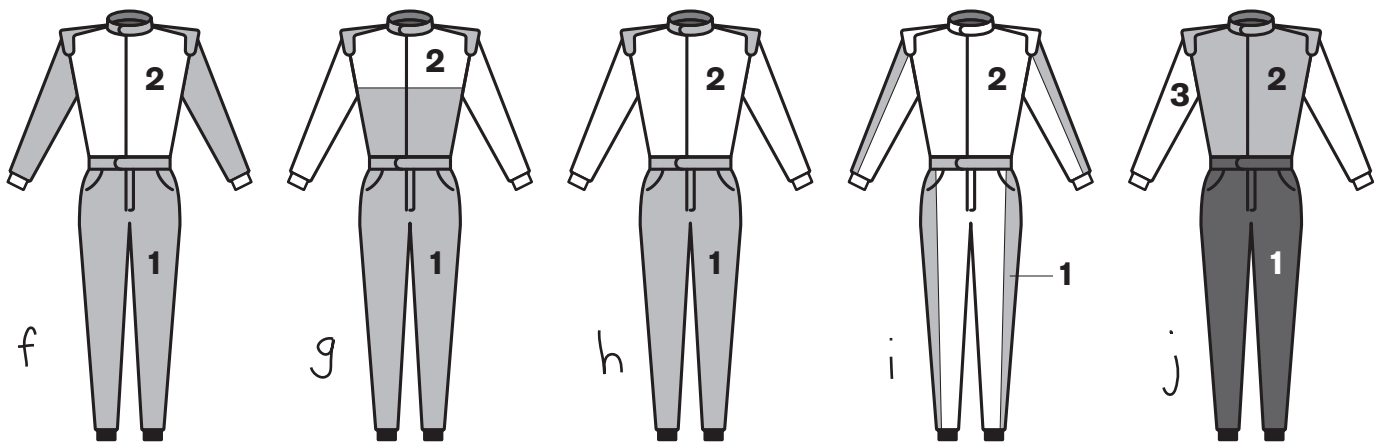
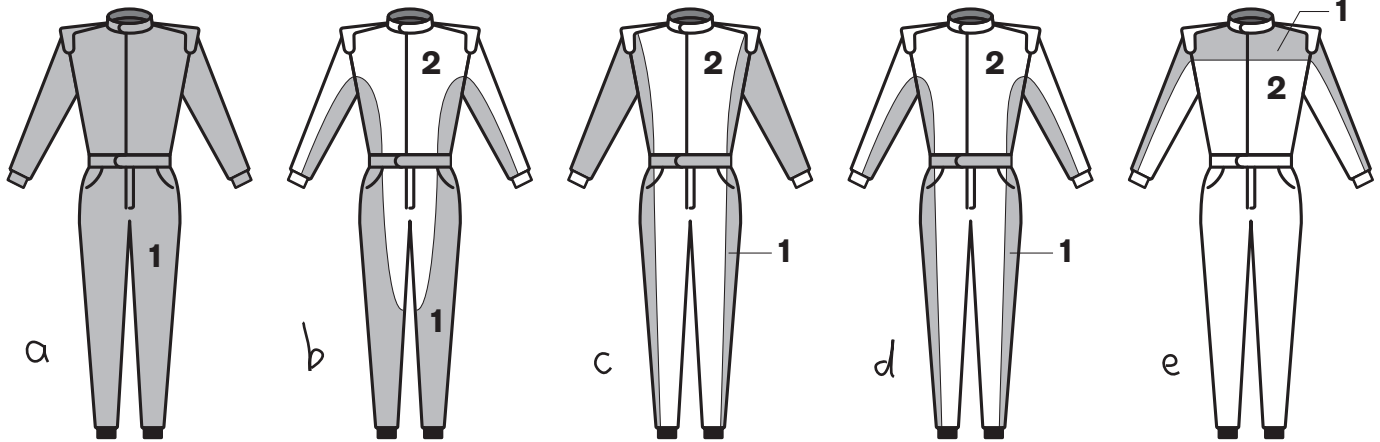
# STEP 2

## SUIT STYLES

What's your style? Represent yourself with a custom style made any way you like. You can create your own or choose from one of our Pre-Select styles below.

Create your own: Turn over to the **back cover** for instructions on how to bring your creation to life.

Pre-Select Styles: View the suits below and select the one that looks best to you. Remember, colors can be changed, but exact shade varies somewhat between batches of Nomex® material.



Find your style? Now go ahead and proceed to the next page to select base options on the suit.



# STEP 3

## SUIT OPTIONS

Now that you've selected your style, it's time to work with the options. Here's where you can add those personal touches to make your racing suit *unique*.

(carry over from step 2) **Suit Style:** \_\_\_\_\_

### PART# OPTION

CS2PC 2-piece option (Jacket/Pants)

CSARM Add arm restraints

CSCRW **Crew Option:** Belt Loops and Back Pockets

CSPOC Add 1 pocket

CSAPR **Professionals Package:** Knit Arm Gussets, Stretch Knit Back Panel, and Leg Boot Cuffs

If you are only interested in pieces of the professionals package, you may choose from the options below.

CSARH Add 360° Knit Arm Gussets



**Gussets** - Full 360 degree radius around the arm to shoulder junction. Made up of Nomex® knit for breath ability and mobility, also referred to as a Knit Arm Hole.

#### COLOR

- Black  Red  
 Blue  Natural

CSBAK Add Stretch Knit Back Panel



**Knit Panel** - Also made up of Nomex® knit, this add-on helps to add a broader range of mobility as well as better air flow.

#### COLOR

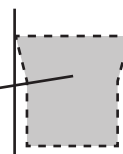
- Black  Red  
 Blue  Natural

CSBCF Add Leg Boot Cuffs



**Boot Cuff** - Upgrade your sense of style with this appearance enhancing feature. The outer liner fits perfectly over any racing shoe while the inside knit tucks into the boot.

Knit cuffs  
hidden  
inside legs



CSXSZ XX Sizing charge for 48" waist or 7' height and up

CSBXQ Add Box Quilting



**Box Quilting** - Instead of standard vertical quilting, this visual look will create a more polished style.

COLOR

Stitch color: \_\_\_\_\_

CSEPS Add Shoulder Epaulets

**Epaulets** - Epaulets are the accenting shoulder pieces. Made in either straight or Daytona (curving down on shoulders) styles. Usually made in a contrasting color.

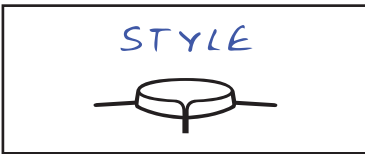
STYLE

Daytona

Standard



CSNCL Add NASCAR (no Velcro®) Collar



CSNAM Embroider Name on Chest or Belt

Chest

Belt

Blood

Block Lettering

Script Lettering

Type: \_\_\_\_\_

COLOR

Stitch color: \_\_\_\_\_

Name: \_\_\_\_\_

CSEMB Custom Embroidery

CSPIP Add Contrasting Piping on Belt, Collar, and Epaulets

Stitch color: \_\_\_\_\_ (Piping is the rounded trim in seams of a custom suit)

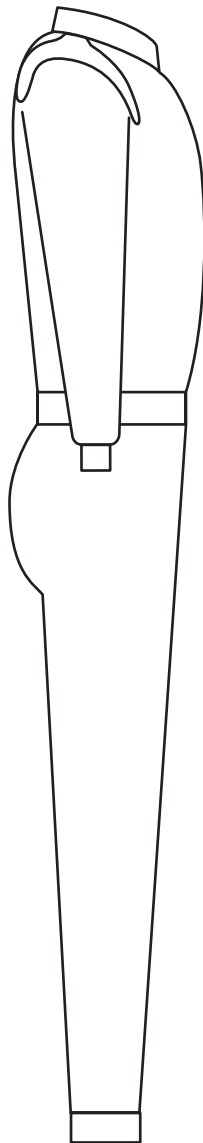
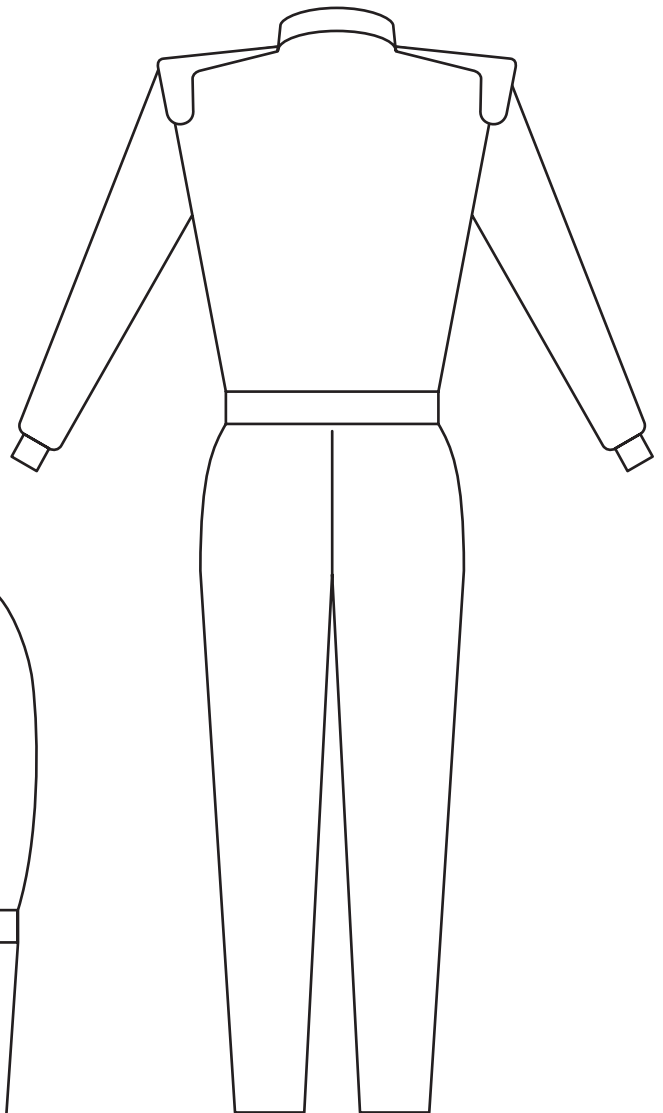
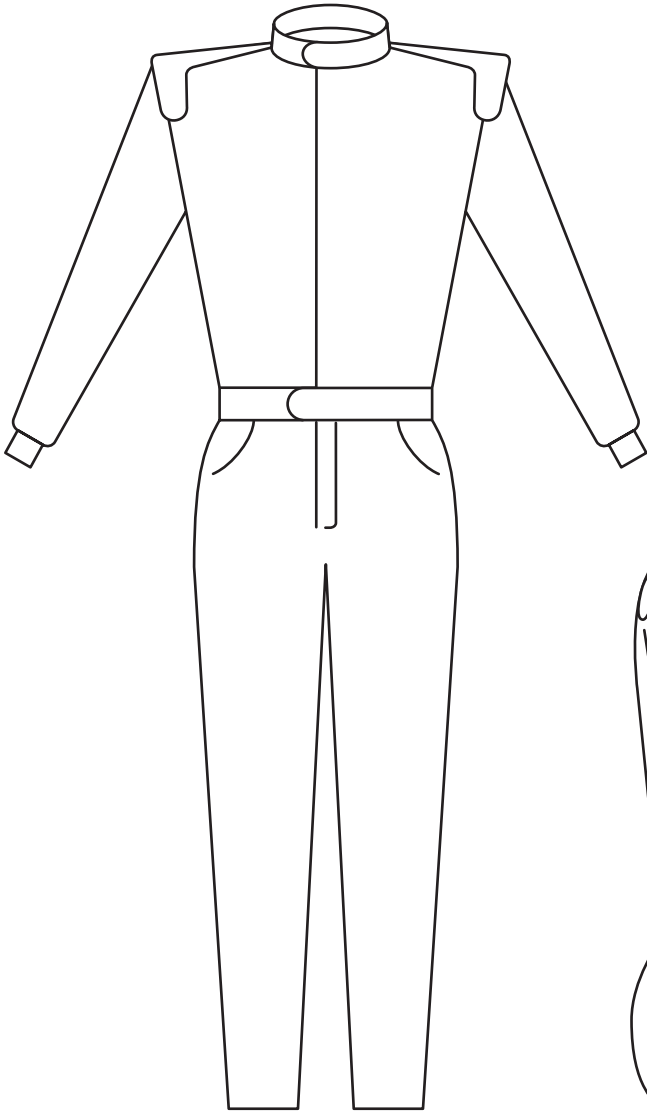
CSFRT Total Freight Charge for Test Suit and Final Suit

\$20.00

For the lowest possible price on your custom G-FORCE Racing Gear suit, please consult your favorite G-FORCE Racing Gear product dealer.

# DESIGN YOUR OWN CUSTOM SUIT

Already have an idea on the perfect suit? Here's where you can show us what's on your mind. Use the blank templates below to bring your imagination to life!



NOTES:

---

Please remember to show all dimensions and measurements related to the design. Also, include any patch information you will want sewn on during production.

To determine a base price for this custom drawn suit, please contact your favorite G-FORCE Racing Gear Dealer.